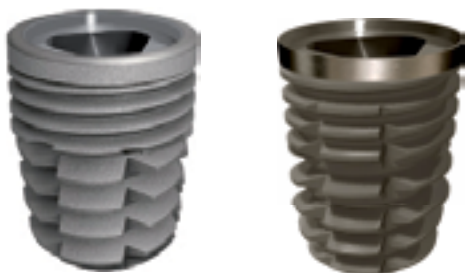


SHORT IMPLANT



5.50 mm

6.50 mm

8 mm

The BT-Tite short implant line offers a wide range of accessories and prosthetic options specifically designed for the Platform Switching with the aim of providing complete solutions and grant optimal esthetic results.

BT-TITE CV3

The main feature of this implant line is the Platform Switching, that is the use of an abutment with a smaller diameter than the one of the fixture that allows to switch the abutment-fixture junction towards the center of the implant axis. The fixture, which is self-threading and anti-rotational, has longitudinal grooves located along the implant body and up to the collar. These make the insertion of the implant in the osteotomy easier and help to unload forces, gas, liquids, and bone residues created during the screwing process.

Such procedure enables the increase of the unscrewing force right after the insertion, favoring the increase of the osseointegrating surface with the consequent improvement of the primary stability.

BT-TITE ACTIVE

BT-Tite Active represents the highest extent of BTLock technology and research.

The longitudinal grooves and the very deep thread make the insertion into the osteotomic site easier and help to download tensile forces, gas, liquids and bone residues which are created during the screwing and at the same time they prevent unscrewing. The DMA surface, obtained from physical-mechanical treatments (sandblasting by material at controlled granulometry) and chemical treatments (double acid-etching and passivation at controlled lengths) - which makes the surface nanoporous, allow a better osteointegration and consequently a better primary stability even in less dense bone. Terminal side of the collar is machine-cut, in order not to interfere in the matching side between fixture and abutment.

ADVANTAGES

The use of Short implants has considerable advantages, that are:

- offering a solution to cases of limited vertical bone height;
- maximizing implant placement possibilities;
- reducing complex procedures that would require bone grafting;
- minimizing surgical interventions of maxillary sinus lift;
- reducing the time of the treatment, with consequent increase of patients' acceptability and cost reduction

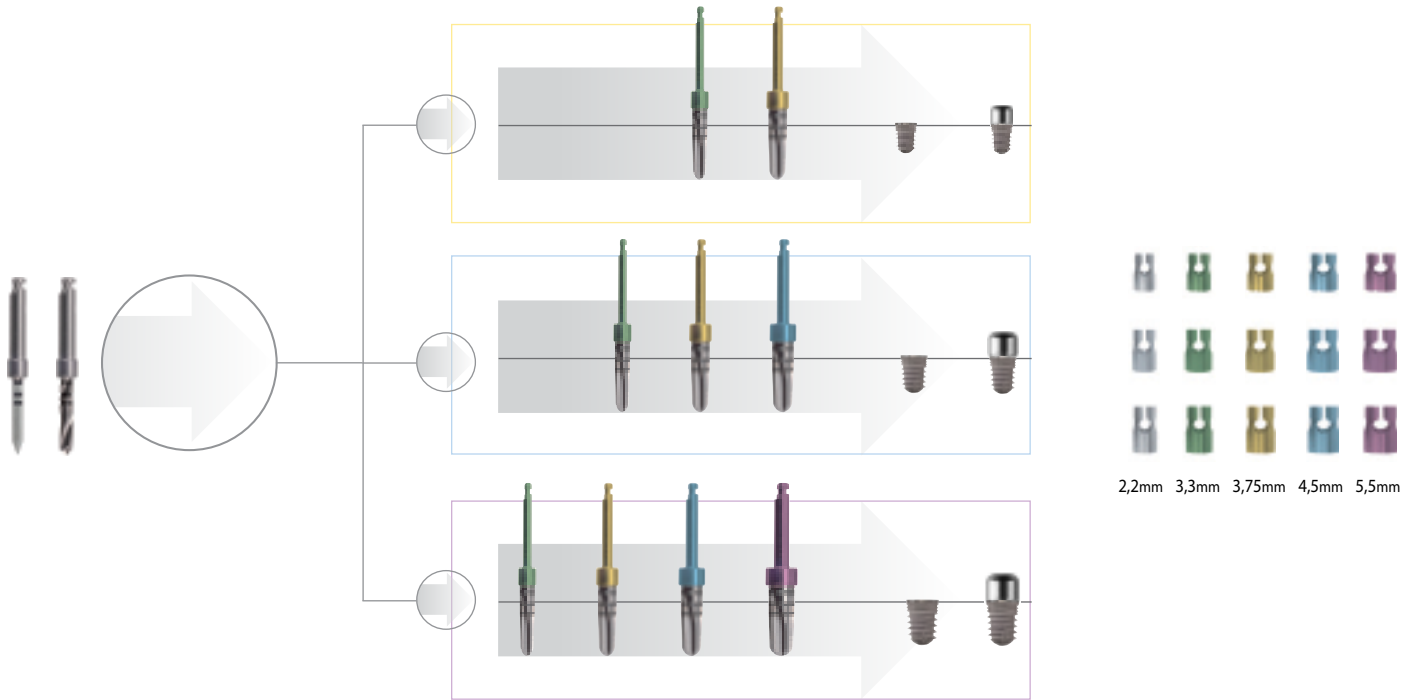
The BT-Tite Short implant line offers a wide range of accessories and prosthetic options specifically designed with the aim of providing complete solutions and grant optimal esthetic results.

MEASURES

		Lenght	Code			Lenght	Code
■	ø 3,75 mm	5,5 mm	375055 BTICV2/CV3/VA	■	ø 5,50 mm	5,5 mm	550055 BTICV2/CV3/VA
		6,5 mm	375065 BTICV2/CV3/VA			6,5 mm	550065 BTICV2/CV3/VA
		8 mm	37508 BTICV2/CV3/VA			8 mm	55008 BTICV2/CV3/VA
		Lenght	Code			Lenght	Code
■	ø 4,50 mm	5,5 mm	450055 BTICV2/CV3/VA				
		6,5 mm	450065 BTICV2/CV3/VA				
		8 mm	45008 BTICV2/CV3/VA				

Please note: short implants are not available for the US.

SURGICAL PROTOCOL










SURGICAL BOX FOR SHORT IMPLANTS



Box only: BTISBOX

Kit: BTIMKS

Straight key		BTICCD
Ratchet wrench		BTICR
Standard driver		12528 BTICVQ
Hand driver		125 BTICV
Depth Gauge		BTIIPR
Pilot drill		BTISPBA
2,2 mm twist drill		220A BTITW
3,3 mm short drill		330A BTIFC
3,75 mm short drill		375A BTIFC
4,50 mm short drill		450A BTIFC
5,50 mm short drill		550A BTIFC